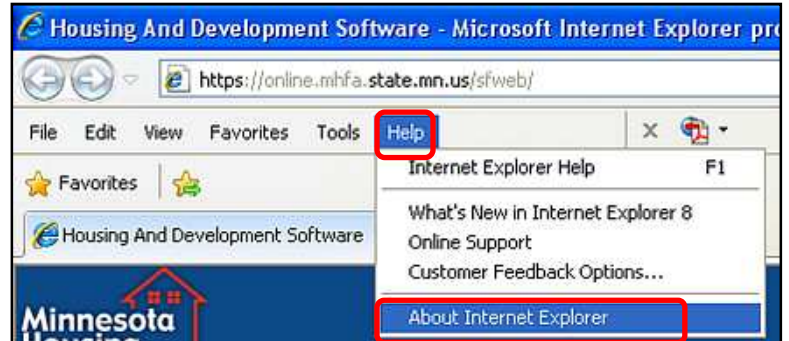


# Internet Explorer 8 & 9 Compatibility with the HDS Single Family Web Application

HDS is compatible with Internet Explorer versions 6 & 7. If you're using **Internet Explorer 8, 9** or higher, you will need to complete the *Compatibility View* change below.

## To determine what version of Internet Explorer you are using:

At the top of the Minnesota Housing HDS Single Family Web page, click on **Help** and click on **About Internet Explorer**.




This will launch the **About Internet Explorer** box to the right which includes your Internet Explorer version. HDS SF Web Application supports Internet Explorer versions 6 & 7 at this time.



## Why don't some websites display correctly in Internet Explorer?

Websites designed for earlier versions of Internet Explorer might not display correctly in the current version, showing up as a jumble of out-of-place menus, images and text boxes. Often, you can improve how a website looks in Internet Explorer by using *Compatibility View*.

When you turn on *Compatibility View*, the webpage you're viewing—and other webpages within the website's domain—will be displayed as if you were using an earlier version of Internet Explorer.

If Internet Explorer recognizes a webpage that isn't compatible, you'll see the *Compatibility View*  button on the Address bar that looks like a torn piece of paper. The *Compatibility View* button will appear **green** in Internet Explorer 8 and **blue** in Internet Explorer 9.

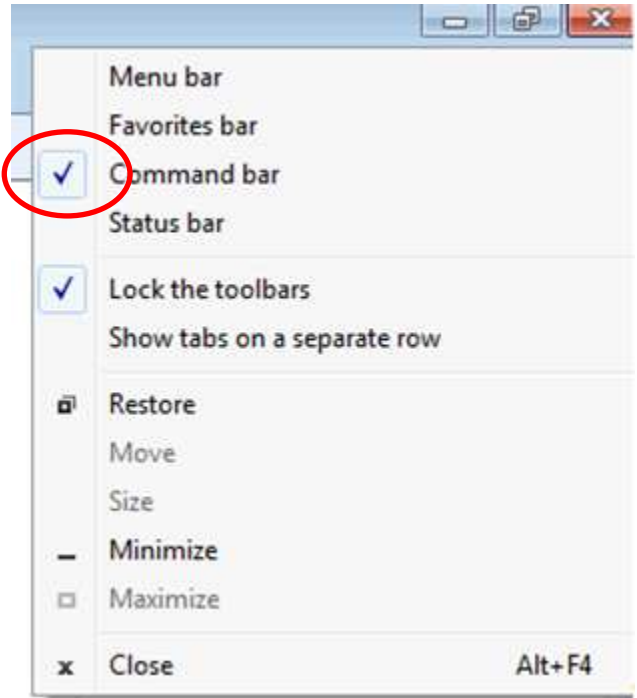
## How do I 'activate' the Compatibility View?

Click the "**Compatibility View**" toolbar button, located next to the Refresh button on the Address Bar:

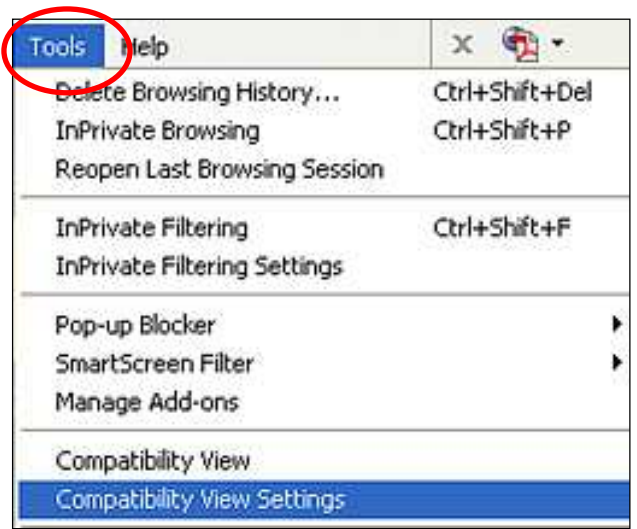


**Do I have to click on the “Compatibility View” button every time I log into HDS or the Minnesota Housing website?**

No. If you do not want to do this every time for sites you visit frequently, you can maintain a list of sites that should be displayed in *Compatibility View*. The default setting for Internet Explorer 9 is to not display the **Command Bar**. Right click on the Menu bar and select the Command Bar this is represented by the checkmark.

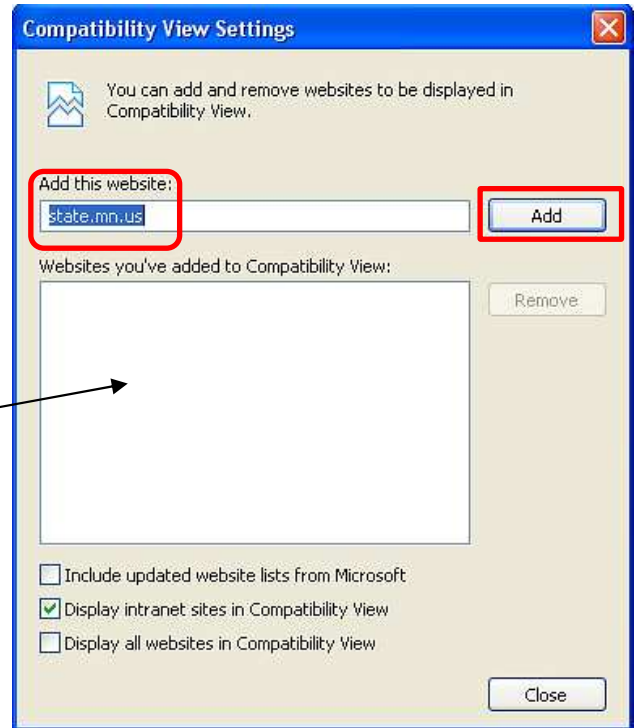


From the **Command Bar**, select **Tools**, and then select **Compatibility View Settings**.



# Internet Explorer 8 & 9 Compatibility with the HDS Single Family Web Application

The following window will open which will allow you to add and remove sites from this list. There are also options for viewing all websites and intranet sites in *Compatibility View*. Once you click “**Add**”, you’ll see the websites you’ve added to *Compatibility View*.



To remove the website from the *Compatibility View* list, click on the website name and click **Remove**.

